



RISEDALE
A family of learners

RISEDALE SCHOOL

Headteacher: Mrs L Greenwood - BA (Dunelm), NPQH
Hipswell, Catterick Garrison, North Yorkshire. DL9 4BD
Tel: 01748 833501 | Email: enquiries@risedale.org.uk
www.risedale.org.uk | @RisedaleSchool @RisedaleFamily

Tuesday, 15th July 2025

Dear parent/carers,

SUBJECT: Headteacher's Letter - July 2025

As the summer term draws to a close, we hope that pupils and families are all looking forward to having some well-deserved time off and will have the opportunity to enjoy a restful and rejuvenating break. I cannot quite believe that I have almost been at Risedale for a year! I have been well supported and welcomed by staff, pupils, governors and parents/carers, and for this I thank you all. Being a Headteacher is not easy, but it is a privilege, and I am determined to ensure that all pupils and staff at Risedale are supported to be the BEST versions of themselves. We have made lots of progress in many areas this year, and I am proud of all our achievements: good routines have been established, standards of behaviour have risen, attendance has improved, persistent absence has fallen, and staff have worked hard on their practice, to name but a few.



Before we finish for the holidays, we wanted to provide you with some important information and key reminders to ensure a smooth end to this academic year and transition into the next one.

I would like to take this opportunity to welcome the parents/carers of all new pupils who will be joining us in September. Please do get in touch if we can support you in any way. We look forward to helping your child have an exciting and rewarding time at Risedale, where they will make many new friends.

Finally, I would like to thank all of our staff who have worked exceptionally hard, as always, to support the effective running of the school. We wish staff who are leaving for new adventures our best; they will always be part of our Risedale Family, as will all former pupils. I would like to pay particular regard to Mrs Plews, who has been with us for 25 years as an art teacher and is now retiring, and to Miss Benson, who has worked tirelessly to support pupils in a pastoral and safeguarding capacity at Risedale for 26 years. Our thanks go to these two particularly dedicated members of staff.

I wish you and your family a restful and enjoyable summer holiday, and thank you for your support.

Greenwood.

Mrs L Greenwood
Headteacher



Arrangements for the Last Day of Term

Our final day of term is **this Friday, 18th July**.

Pupils should attend school at the normal start time in uniform, and lessons will continue until lunchtime. The canteen will open for pupils as normal, and lunchtime will end at 1:10 pm.

Following lunch, pupils will go to their normal tutor time room for 1:15 pm, where they will have a final form period with their form teacher and be registered. School will then officially end for the summer holidays at 1:30 pm.

Please be assured that we have arranged school transport to collect pupils at this earlier time if they normally use this.

Arrangements for the Start of the New School Year

The first day of term for pupils is **Wednesday, 3rd September 2025**.

To ensure a supportive return, pupils will be returning at different times on the first day back in September. Specific details for each year group are as follows:

Year 7 pupils should arrive and line up outside the school, ready for 8:20am. Tutors will meet them and bring them into a welcome assembly. Our dedicated pupil helpers from the transition days and Year 10 pupil ambassadors will be on hand to assist and guide them. Please note that Year 7 will have an early lunch (20 minutes early at 1:00 PM) on Wednesday and Thursday of the first week to support them getting used to the lunch system. Timetables and planners will be handed out to Year 7 during their first day. Please make sure your child has their bag, pencil case, pens, etc.

Years 10 and 11 will be welcomed onsite at 9:50am and should go straight to their tutor room to start the first session by 9:55am.

Years 8 and 9 will be welcomed onsite at 11:15am and should go straight to their tutor room to start the first session by 11:20am.

Formal teaching for all year groups will commence from Lesson 4 onwards on the first day.

The school bus and taxis will run at their normal times, so any pupils who use these services will need to travel at their usual time. Therefore, any pupils in Years 8-11 who will be arriving early due to travelling by bus/taxi will be supervised by staff until their day starts later that morning.

If you have any questions regarding these arrangements, please do not hesitate to contact the school before we break up for the summer holidays.

Pupil Planners

We are excited to announce that all pupils will receive a planner from September. These planners will serve multiple important purposes.

- **Reward System:** pupils will receive stamps in their planners to acknowledge and reward their excellent work and positive contributions to the school community. These will add up to result in rewards.
- **Homework Recording:** the planner will be used by pupils to record all homework tasks, helping them stay organised and on track.
- **Daily Essential Communication:** it is crucial that pupils bring their planner to school each day.

We kindly request that you review and sign your child's planner weekly. This will help you stay informed about their progress, positive behaviours and homework commitments.

From September, you will be able to access all information about your child's progress, praise and behaviours through the MCAS app. We will NOT be using Epraise from September onwards, to simplify and unify the systems we use to communicate.

Times of the School Day

A reminder that the school day starts at 8.30am and all pupils should be in registration by this time. The gates open at 8.20am, and pupils should be entering at the latest by 8.25am to ensure they are on time.

An additional reminder that from September, we will be operating with a **2-week timetable** and **5 x 1-hour lessons per day**. The start and finish times of the school day will not change.



This information was communicated to parents/carers via letter on 16/06/2025. You can view the letter here >> [Times of the School Day from Sept. 2025](#).

We will maintain our relentless focus on punctuality in the new academic year, and a pupil will be marked as late if they are not in registration by 8.30am. Thank you for your support in this matter.

Website Link >> [Times of the Day](#)

Uniform Information

A high standard of uniform is expected from all pupils, fostering a sense of pride and belonging within our school community. Please ensure your child adheres to the [Uniform Policy](#).



Here is a summary of the key uniform requirements:

Blazer: a black blazer with a patch pocket embroidered with the school badge. This must be purchased from Schoolshop only, as it is branded. Blazers should be worn at all times, except on designated non-blazer days (decided by the Headteacher during excessively warm weather) or if a teacher grants permission to remove it within a classroom due to temperature. As a reasonable adjustment, blazers will be optional for all pupils during the final half of the Summer Term (from June onwards).

Tie: pupils wear a tie in their specific house colour ([Attenborough](#), [Pankhurst](#), [Seacole](#), [Turing](#)), which helps to generate a strong sense of identity and belonging. These can be bought directly from Schoolshop online. Replacement ties are available to purchase either via [ParentPay](#) from the school reception or by bringing £7.00 cash into the school.



Shirt: a formal plain white shirt or fitted blouse (worn tucked in) with the neck fastened for the tie.

Skirts or Trousers:

- **Skirts:** must be plain black and of appropriate length – short skirts above mid-thigh are not acceptable in a school environment at any time.
- **Trousers:** must be tailored, plain black and full-length to the shoes. Leggings, jeggings, jeans, and joggers are not allowed.
- **Shorts (optional and seasonal):** plain black trouser-type/tailored shorts may be worn instead of skirts or trousers in the hot summer months. Sports shorts of any type are not permitted.

Jumper (optional): a plain black jumper may be worn under the blazer. No logos should be visible. Hoodies are not to be worn on the school site, including in playgrounds.

Coats (optional): if worn, coats must be worn over the top of the blazer and not instead of a blazer. No outdoor coats should be worn inside the school building. Hoodies are not permitted.

Shoes: flat-heeled, plain black leather, leather-look shoes or plain black trainers are to be worn. Footwear must not have coloured logos, stripes, or designs. Converse, Vans (or similar canvas pumps), high-heeled shoes, platform shoes, or tall boots are not permitted.

Socks or Tights: plain black/dark socks or black/neutral-coloured tights.

Belts (optional): plain black or brown single-colour belt with a simple small plain buckle.

PE Kit:

- **T-shirt:** Risedale PE t-shirt (Schoolshop only as branded).
- **Shorts:** Plain navy shorts.
- **Socks:** Navy sports socks.
- **Trainers:** Appropriate sports footwear.
- **Jumper (Optional):** Risedale branded zip sports top (Schoolshop only as branded).
- **Skort (Optional):** Navy.
- **Leggings (Optional):** Navy.
- Branded/designer/fashion sportswear is not permitted.



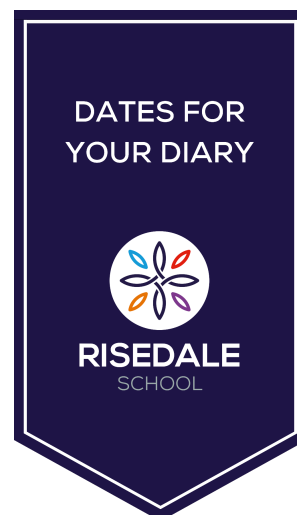
For information and guidance on purchasing Risedale School uniform please visit our dedicated [Uniform](#) website page.

IMPORTANT: To guarantee delivery for September 2025, please order all school uniform online at [SchoolShop](#) before Tuesday, 29th July.

Dates for Your Diary

Thursday 21 August	GCSE Results Day
Monday 1 September	Training Day 1
Tuesday 2 September	Training Day 2
Wednesday 3 September	Start of Autumn Term 1 (pupils return)
Tuesday 16 September	Y7 & 10 School Photographs
Thursday 25 September	Y6 Open Evening (6pm -7:30pm)
27 - 31 October	Half-term Holiday

Website Page: [Calendar & Term Dates](#)



Attendance, Absence and Punctuality

As we look forward to the new academic year beginning in September, we want to renew our shared commitment to excellent attendance. Every day in school counts, and every lesson forms a building block for future learning. Consistent attendance is crucial for academic success, social development, and personal well-being.

Our school-wide attendance target for the 2025-2026 academic year will again be **96% or above**. Reaching this goal is a partnership, and we need your help to ensure your child has every opportunity to thrive.

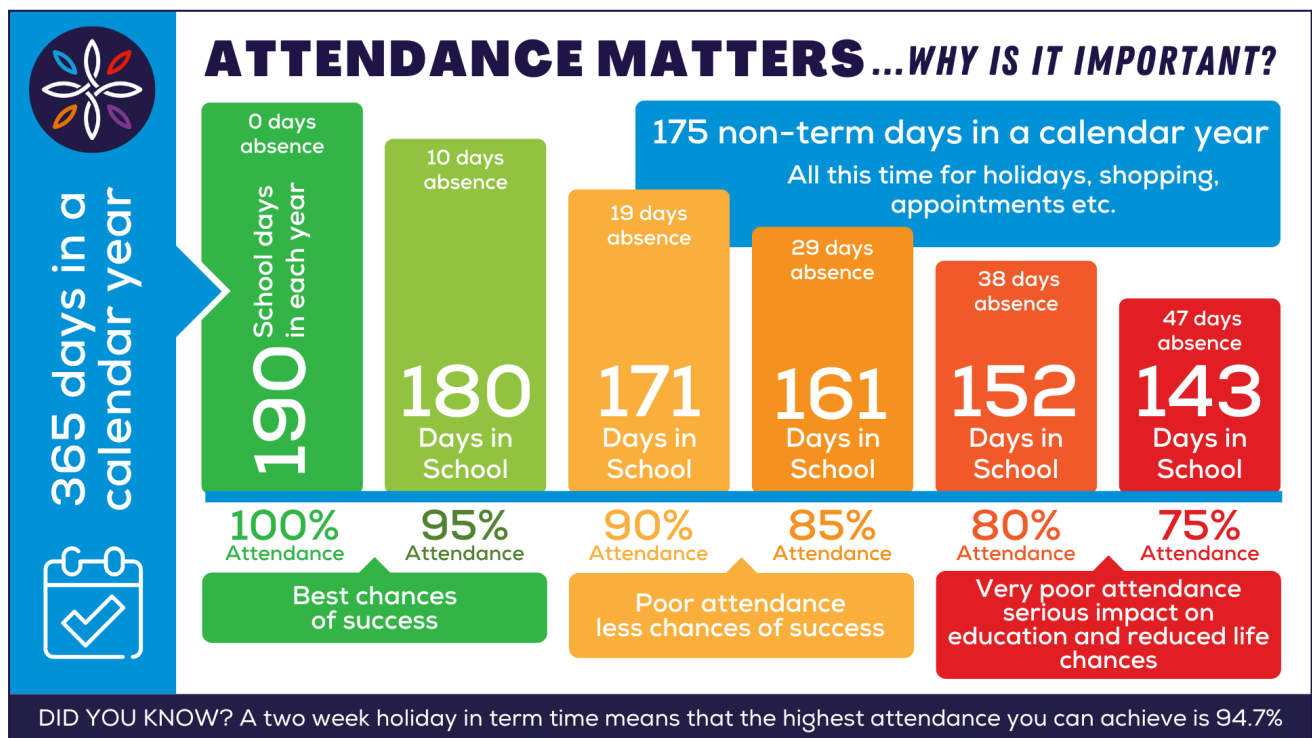
A Reminder of Our Attendance Procedures:

- **Reporting Absence:** if your child is too unwell to attend school, please telephone the school office or email the absence email (link to email address) **before 8.30am** on the first day of absence.
- **Medical Appointments:** please try to schedule routine appointments outside of school hours. If an appointment during the school day is unavoidable, please inform the school in advance.
- **Holidays:** please remember that, in line with government policy, holidays taken during term time cannot be authorised. Unauthorised absences may result in a penalty notice being issued by the local authority.

We understand that circumstances can sometimes make regular attendance difficult. If you are facing challenges, please contact us. We are here to offer support and work with you to find a positive solution.

We do see attendance rates fall as pupils get older, and we ask for your support with this. Please, as parents/carers, be aware that this is a national trend and support us in getting your child(ren) into school on time each day unless they are too ill to function in school.

Website Page: [Attendance, Absence and Punctuality](#)



Safeguarding

If you have any concerns about a child over the summer holidays, please refer to the [Safeguarding](#) section of our website, where you will find all the information you need to refer a child. The contact number for the North Yorkshire Multi-Agency Screening Team (MAST) is 0300 131 2131. Additional information about making a referral can be found on their website [HERE](#).

Parents and carers can visit the [North Yorkshire Safeguarding Children Partnership](#) website for more safeguarding advice and information, or call the NSPCC Helpline on 0800 800 5000. For pupils, the NSPCC Childline number is 0800 1111.



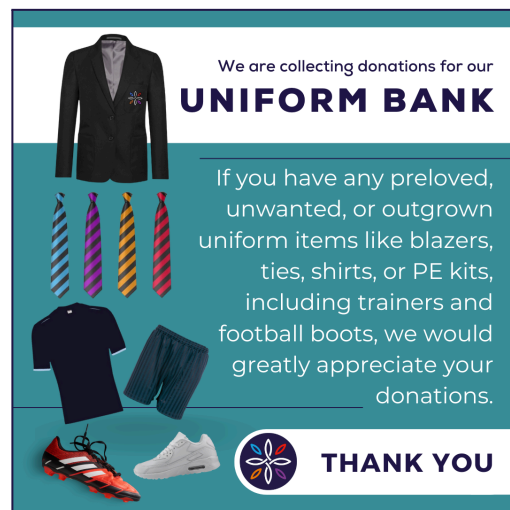
Website Page: [Safeguarding](#)

Uniform Bank: Risedale Parents / Carers... WE NEED YOUR HELP!

Please donate your pre-loved uniforms to the Risedale Uniform Bank. Help us build a sustainable future for Risedale School pupils.

If you have any preloved, unwanted, or outgrown uniform items like blazers, ties, shirts, trousers/skirts or PE kits, including trainers and football boots, we would greatly appreciate your donations.

Drop off your unwanted, clean items at the school reception. Your donation will help families save money and reduce waste.



Thank you for your support! #TeamRisedale 

Risedale Needs YOU! Join Our New PTA! Meeting in September

We're excited to announce our plans to establish a Parent Teacher Association (PTA) at Risedale School, and we need your help to make it a success! A PTA is a fantastic way for parents/carers and staff to work together, enriching our Risedale Family and enhancing the experience for all our pupils.

Joining our new PTA means you can:

- Make a real difference
- Connect with other parents
- Be a voice for your child

Whether you have a lot of time to give or just a little, your contribution would be invaluable. We're looking for enthusiastic individuals to help us get this exciting new venture off the ground.

If you're interested in learning more or would like to be involved in forming Risedale's PTA, please speak with Mrs Cox or email Cox.S@risedale.org.uk. We will be meeting in September to discuss plans.

Let's work together to help every pupil be the **BEST** version of themselves, embodying our school's values of **RESPONSIBILITY**, **RESPECT**, **RESILIENCE**, and **RELATIONSHIPS**.



Community Messages from External Providers

FEAST Vouchers:

Redeem your vouchers for free holiday activities with food this summer

FEAST vouchers have now been issued to all families whose children/young people receive benefits-related Free School Meals. These vouchers entitle children to free places on FEAST activities this summer holiday, where they'll also receive a free healthy meal. Parents/Carers should have received this voucher via email or text from a platform called [HolidayActivities](#). Follow the link in the email to redeem your voucher and book your child's place on some of the fantastic activities on offer in our area.



If you believe your child is eligible and you have not yet received your voucher, or you have lost it, please contact the school office.

To learn more about FEAST, and for information on activities, eligibility and how to manage your bookings, visit the [FEAST website](#).

Post-16 Transport Assistance 2025/26

Information for Year 11 pupils (and their parents/carers).

If you're heading to sixth form or college in 2025/26, you might be eligible for Post 16 transport assistance from North Yorkshire Council.

Check full eligibility and apply now! The application form and details are live on the NYC website:

www.northyorks.gov.uk/post16transport.

Don't forget to apply by 31st July to guarantee transport for the start of term!

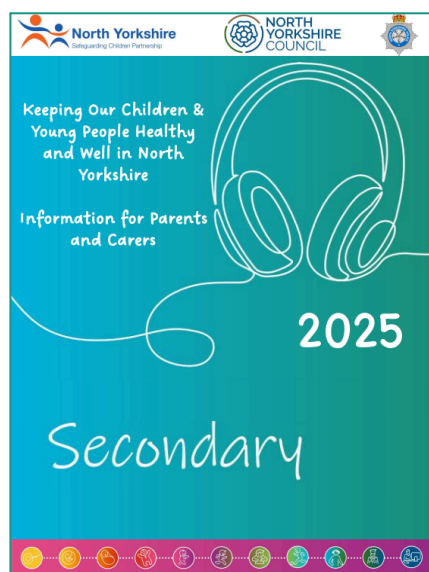


Keeping Our Children & Young People Healthy and Well in North Yorkshire: Information for Parents and Carers 2025

The "Growing Up in North Yorkshire Survey 2024" results have now been published. This survey, conducted every two years, gathers vital insights from children and young people across North Yorkshire about their health, wellbeing, and learning.

Based on the 2024 findings, North Yorkshire Council has created helpful flyers titled "Keeping Our Children & Young People Healthy and Well In North Yorkshire." There's a version tailored for those with primary-aged children and one for secondary-aged children, guiding you to useful information and support services.

Find the flyers and full reports here: [Growing up in North Yorkshire Survey > Healthy Schools North Yorkshire](#)



Train to Teach Part-Time with Red Kite!

Are you considering a career change or looking for a flexible way to become a primary school teacher while managing family commitments? Red Kite Teacher Training offers a part-time, two-year route into primary teaching that might be perfect for you!

You can find more information about this part-time course and how to apply by visiting the Red Kite website: [Red Kite Teacher Training - Part-Time](http://www.redkiteteachertraining.co.uk)



Part Time Teacher Training

Thinking about a career in primary teaching but need flexibility? Our part time course is perfect for parents and career changers with a degree. You can continue working part time while training with us to gain Qualified Teacher Status and a PGCE from the University of Leeds.

We understand life is busy, so our two-year course is designed with your commitments in mind. With tailored school placements, a clear calendar and professional training days, you'll be fully supported every step of the way.

Part Time Courses Offered

- Primary 3-7
- Primary 5-11

Find out more > www.redkiteteachertraining.co.uk

RED KITE
TEACHER TRAINING

Gas Safe Charity Funding

Choices4Energy at North Yorkshire Council has funding available until September to help homeowners with low income and/or disability to pay for measures that address potential gas safety, gas leaks or CO poisoning (<£36,000 household income, other criteria may apply). This includes measures such as repairs and servicing of gas boilers, fires and cookers. Badly fitted or poorly serviced gas appliances can put you and your family at risk. There is a maximum grant of £500 per household, and we are encouraging homeowners to check gas appliances now to ensure they are safe to use, ready for winter. Contact 0300 131 2 131 and ask for Choices4Energy, or visit Choices4Energy | North Yorkshire Council for more information or view the [Gas Safety leaflet](#), which provides info about the funding available.

NHS Pharmacy First For Children

Parents and carers are encouraged to use Pharmacy First this summer.

Parents and carers in Humber and North Yorkshire are being reminded to use their local community pharmacy this summer if their child needs help with minor illnesses or ailments.

The NHS Pharmacy First service allows children to get NHS treatment – and access to antibiotics where appropriate – for five common conditions from their local pharmacy, without needing a GP appointment.

The five common conditions are:

- impetigo (aged one year and over)
- infected insect bites (aged one year and over)
- earache (aged one to 17 years)
- sore throat (aged five years and over)
- sinusitis (aged 12 years and over)

Please visit Pharmacy First to find out more information.



NORTH YORKSHIRE COUNCIL

Gas Safe Charity
Foundations

Are Your Gas Appliances Safe?

Having a badly fitted or poorly serviced gas appliance can put you and your family at risk. You may also be left without heating or hot water.

ACT NOW and make sure you're safe and ready for winter by getting your gas appliances serviced or repaired in summer.

LIMITED FUNDING
If you own your own home and have low income and/or disability you may qualify for a **hardship grant of up to £500** through North Yorkshire Council. These are available to help vulnerable residents with the cost of replacing, repairing or servicing dangerous, faulty or inefficient gas appliances such as:

- Gas Boilers
- Gas Water Heaters
- Gas Fires
- Gas Pipework
- Gas Cookers

Funding is limited and available on a 'first come first served' basis.
All works must be undertaken by a Gas Safe registered engineer.

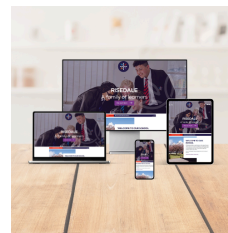
Contact us now before funding runs out:
Call: **0300 131 2 131** and ask for **CHOICES4ENERGY**
Or email us: Choices4Energy@northyorks.gov.uk



General Reminders for Risedale School

School Website

It is recommended that all parents familiarise themselves with the school's website www.risedale.org.uk. There, you can find lots of important information such as [calendar and term dates](#), [letters to parents](#), [uniform](#), [policies](#), [exam information](#), [wellbeing](#) and our [latest news](#), to name but a few.



Uniform

At Risedale, we take great pride in our school uniform and strive to make it as affordable as possible by limiting the number of branded items we offer. Our website provides guidance on the [Uniform](#) policy, which is an integral part of our school's identity. It is mandatory for all pupils to wear the correct uniform at all times. If you have any questions or concerns about the uniform, please contact your child's form tutor as the primary point of contact.



Online Parental Engagement

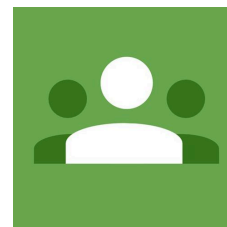
[MyChildAtSchool \(MCAS\)](#) is an online portal for parents that enables you to view your child's performance at school in real-time via the web. **Please check MCAS regularly** as this facility allows you to access your child's timetable, attendance, behaviour and reports whenever you wish to see the latest available information. Parents can access MCAS via the website or can use the MCAS App, which can be downloaded from the app/Google Play Store.



When your child joins Risedale, you will be sent details to allow you to access your account. If you have forgotten your Parent Login details, click [HERE](#).

Google Classroom Parent Alerts

Parents can receive email summaries showing their child's progress in Google Classroom. To become a 'Google Guardian', simply complete this form ['Google Classroom Summary Alerts'](#) and our IT team will set this up for you.



Equipment and Chromebooks

Please ensure your child has everything they need for school to start the day positively and be prepared to learn.

- Chromebook fully charged and in its protective case (Years 8-11 only).
- A pencil case containing the following:
A **black biro**, **red biro** and **blue biro**, pencil, ruler and eraser to enable pupils to take pride in their presentation (P.R.O.U.D).
- PE kit (on the timetabled day).
- Reading book (KS3 only).

P	Write in PEN : black for writing, red for <u>underlining</u> and blue for DIRT
R	Use a RULER for all tables, grids and graphs
O	OOPS! Draw a single line with a ruler through <u>mistakes</u>
U	UNDERLINE titles etc. with a red pen and a ruler
D	Only use a pencil to DRAW with

Always be
PROUD
of your work